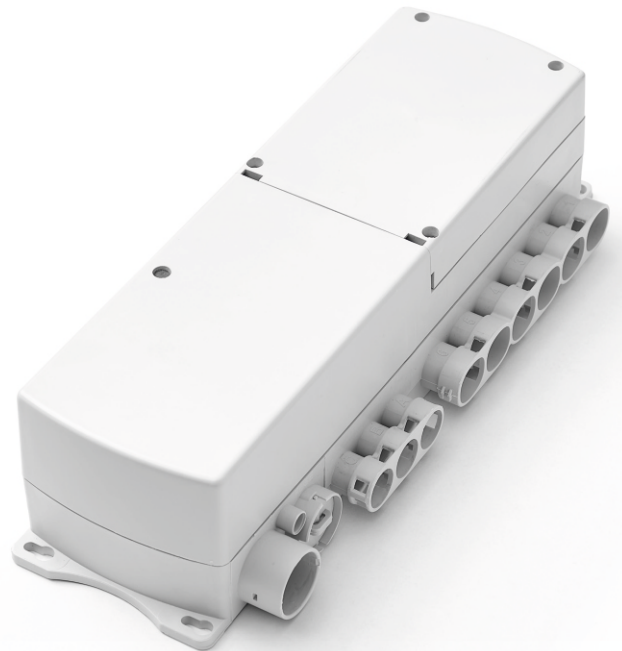


# MCU36B

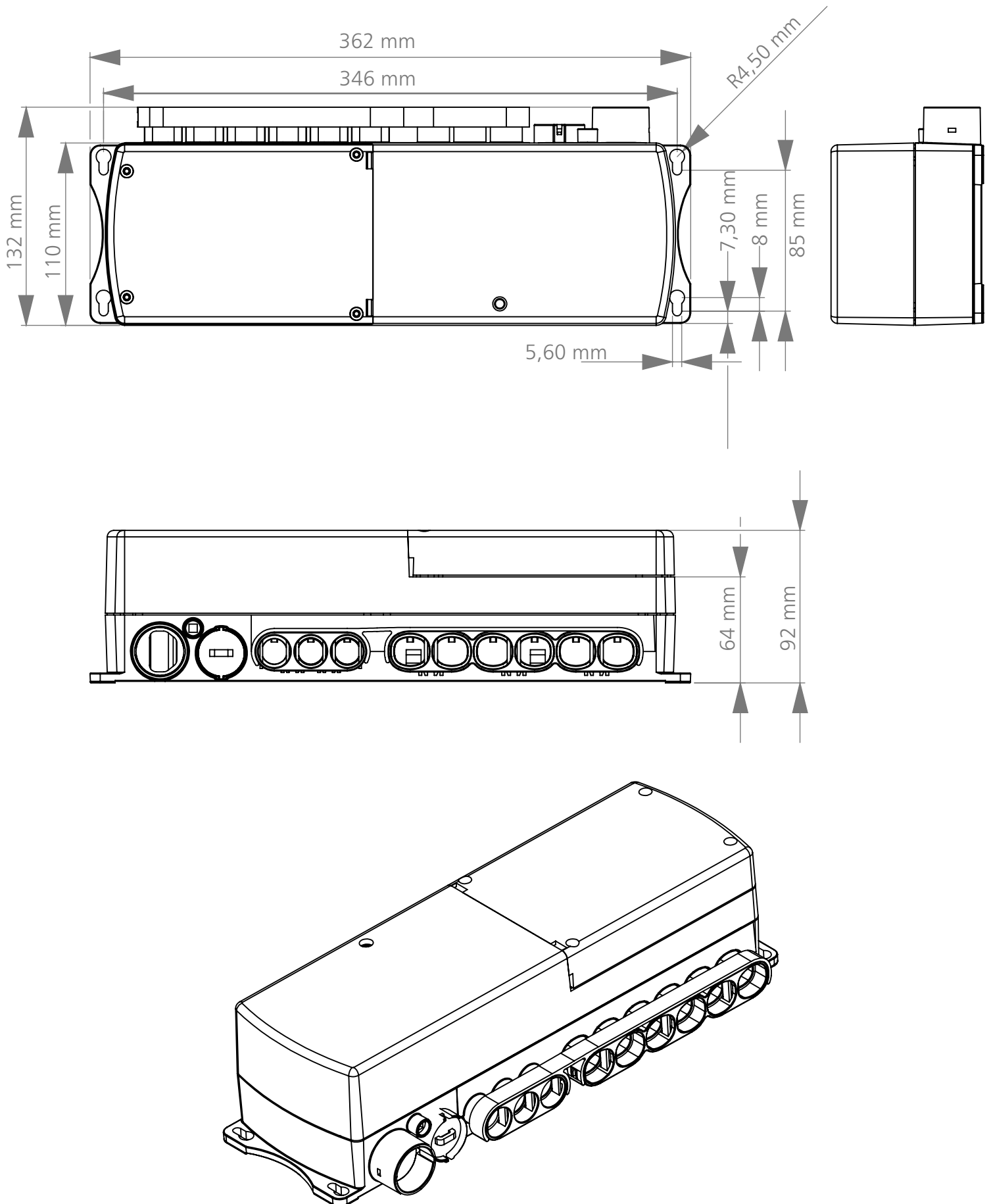
HEALTHCARE SERIES/CONTROL BOXES



## GENERAL FEATURES

Controls Capacity	3
Actuator Control Capacity	4
IP Code	IPX6
Housing colour	RAL7035
Operating Temperature	+5°C to +40°C
Storage Temperature	-10°C to +50°C
Software	MSBus
Mains Indicator	Yes
Power Supply	120 / 230 VAC 50/60 Hz (internal transformer)
Safety system	Thermally protected. Short-circuit protected.
Protection class	Class 2, Class 1 is possible with AC cable
Internal Battery	Yes
Control Method	Relay

# DIMENSION DRAWING



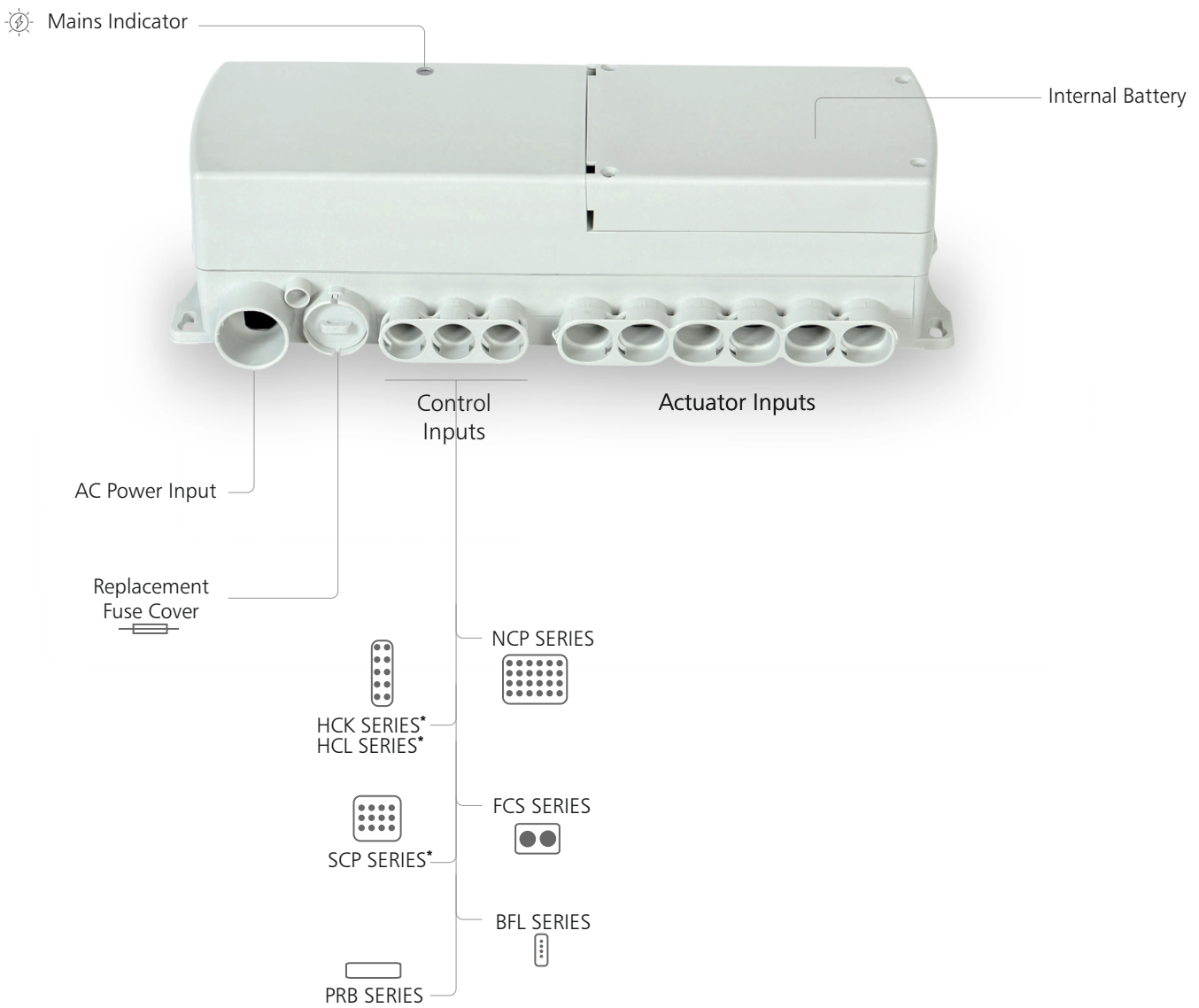
## ORDERING KEY

		<b>MC36</b>
System Architecture	<b>M:</b> MsBus	M
Software Code	<b>01:</b> Standard Software Code <b>XX:</b> Special Software Code The code documentation will be shared with our customers.	01
IP Degree	<b>6:</b> IPX6	6
Number of Controls	<b>3:</b> 3 Controls	3
Number of Actuators	<b>4:</b> 4 Actuators	4
Power	<b>28:</b> 280W	28
Housing Colour	<b>1:</b> RAL7035	1
Battery	<b>B:</b> Internal Battery	B
Control Method	<b>R:</b> Relay	R
H-Bridge	<b>1:</b> Full Bridge	1
Power Supply	<b>1:</b> Transformer	1
Electrical Class	<b>2:</b> Class 2	2
Grounding	<b>2:</b> On AC Cable	2
Reserved for Future Use	<b>00:</b> None	00

Ordering example: MC36M01634281BR112200

# SYSTEM COMPATIBILITY

Ordering Key:MC36M01634281BR112200



HCK SERIES\*, HCL SERIES\* and SCP SERIES\* are only usable with 180 degree cable. Please review the HCK, HCL and SCP datasheet for detailed information.

## Terms of Use

The user is responsible for determining the suitability of MUKATECH products for a specific application. MUKATECH products are subject to change without prior notice.

## Document Revision Information

MUKATECH 20241104 DT.REV04