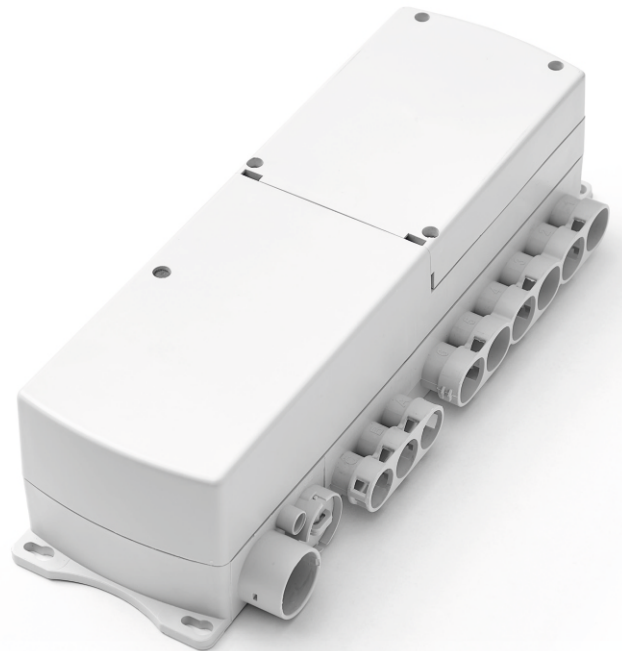


MCU36L

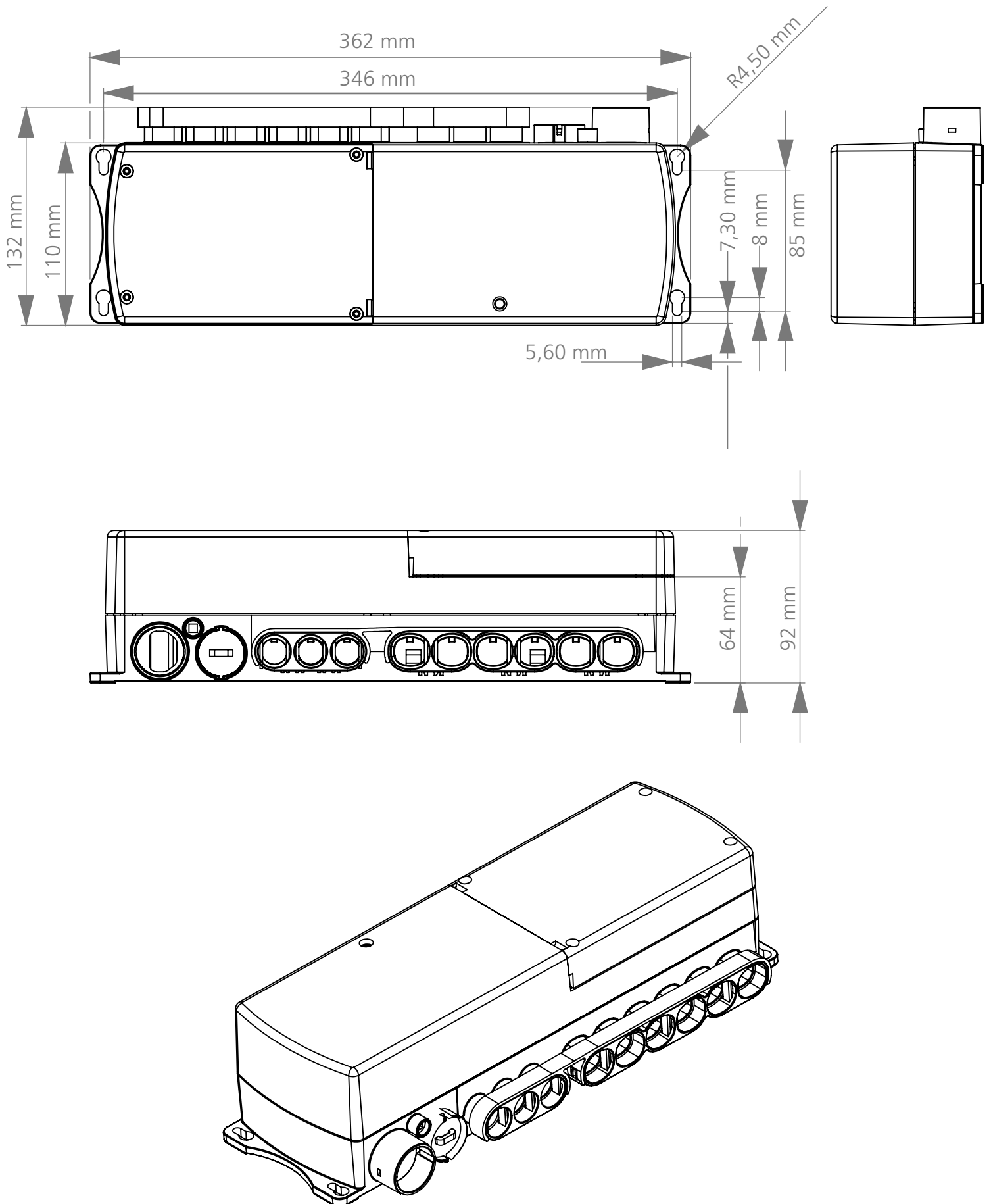
HEALTHCARE SERIES/CONTROL BOXES



GENERAL FEATURES

Controls Capacity	3
Actuator Control Capacity	5
IP Code	IPX6
Housing colour	RAL7035
Operating Temperature	+5°C to +40°C
Storage Temperature	-10°C to +50°C
Software	MSBus
Mains Indicator	Yes
Power Supply	120 / 230 VAC 50/60 Hz (internal transformer)
Safety system	Thermally protected. Short-circuit protected.
Protection class	Class 2, Class 1 is possible with AC cable
Internal Battery	Yes
Control Method	Relay

DIMENSION DRAWING



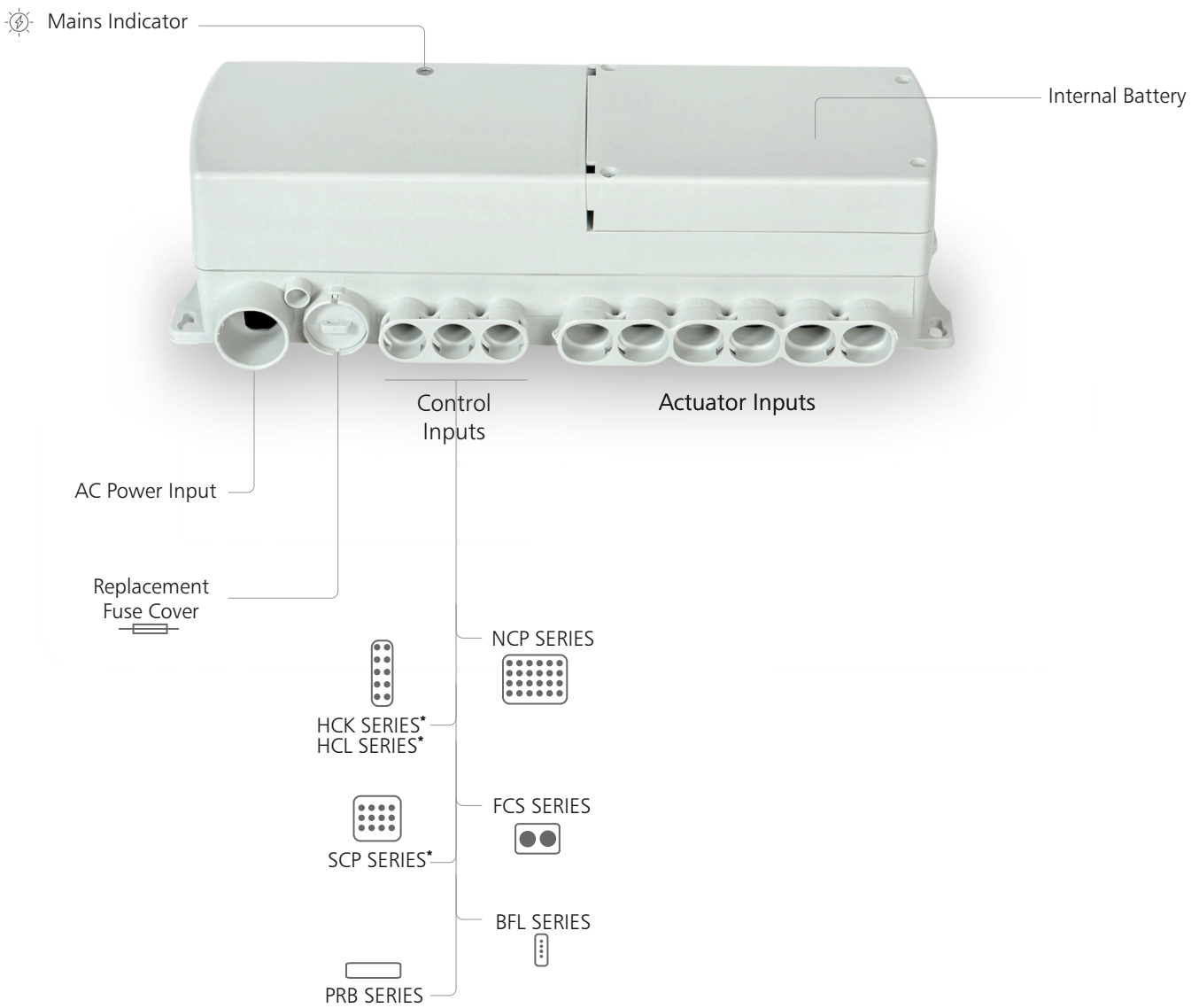
ORDERING KEY

		MC36
System Architecture	M: MsBus	M
Software Code	01: Standard Software Code XX: Special Software Code The code documentation will be shared with our customers.	01
IP Degree	6: IPX6	6
Number of Controls	3: 3 Controls	3
Number of Actuators	5: 5 Actuators	5
Power	28: 280W	28
Housing Colour	1: RAL7035	1
Battery	B: Internal Battery	B
Control Method	R: Relay	R
H-Bridge	1: Full Bridge	1
Power Supply	1: Transformer	1
Electrical Class	2: Class 2	2
Grounding	2: On AC Cable	2
Reserved for Future Use	00: None	00

Ordering example: MC36M01635281BR112200

SYSTEM COMPATIBILITY

Ordering Key:MC36M01635281BR112200



HCK SERIES*, HCL SERIES* and SCP SERIES* are only usable with 180 degree cable. Please review the HCK, HCL and SCP datasheet for detailed information.

Terms of Use

The user is responsible for determining the suitability of MUKATECH products for a specific application. MUKATECH products are subject to change without prior notice.

Document Revision Information

MUKATECH 20241104 DT.REV02